

# MHC II DEXTRAMER®

## MHC II DEXTRAMER® REAGENTS

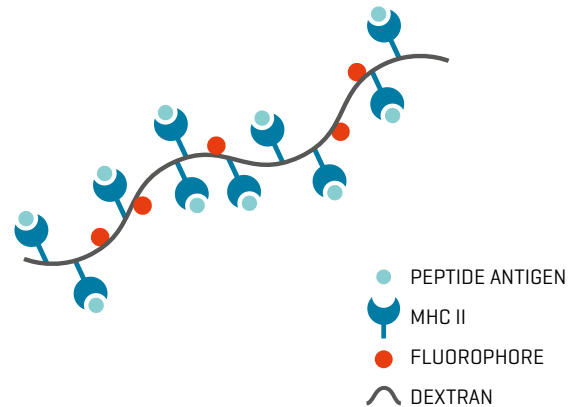
MHC II Dextramer reagents are flow cytometry reagents for identification of CD4+ antigen-specific T cells.

The number and function of disease-specific CD4+ T cells play an important role in the immune response to a variety of diseases including autoimmune disease, cancer, transplantation, infectious disease and allergy.

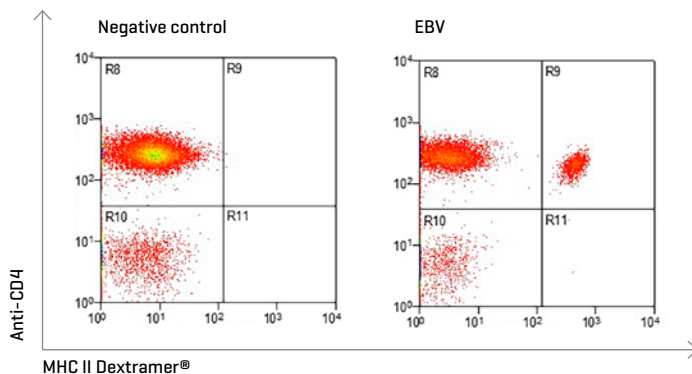
MHC II Dextramer reagents are fluorescence-labeled MHC multimers comprised of a protein-stabilizing dextran backbone and an optimized number of MHC molecules. Antigen-Specific CD4+ T cells are generally of low frequency, with TCR of low avidity and have proven problematic to detect using traditional MHC multimers. The higher valence of the revolutionary MHC II Dextramer reagents provides sufficient avidity to overcome these limitations.

How many T cells have you missed?  
Find out by using MHC II Dextramers.

## MHC II DEXTRAMER®



## MONITOR DISEASE-SPECIFIC CD4+ T CELLS



Detection of DRB1\*0101/EBV-specific T cells in blood sample using flow cytometry

## HUMAN ALLELES

HLA-DRB1\*0101  
HLA-DRB1\*0401  
HLA-DRB1\*1101  
HLA-DRB1\*0301  
HLA-DRB1\*0701  
HLA-DPB1\*0401

**Additional alleles are available upon request.**

Please contact customer support: [customer@immudex.com](mailto:customer@immudex.com)

## STANDARD PRODUCTS

Allele	Peptide	Antigen	Disease / microorganism
DRB1*0101	PKYVKQNTLKLAT	Hemagglutinin	Influenza
DRB1*0101	PVSKMRMATPLLMQA	CLIP	Endogenous Ag
DRB1*0101	TSLYNLRRGTALA	EBNA1	EBV
DRB1*0101	PEQWMFQGAPPSQGT	EBNA3A	EBV
DRB1*0101	LPLKMLNIPSINVH	pp65	CMV
DRB1*0101	QEIYMQHTYPISA	Tetanus Toxin	Tetanus
DRB1*0401	PVSKMRMATPLLMQA	CLIP	Endogenous Ag
DRB1*0401	PKYVKQNTLKLAT	Hemagglutinin	Influenza
DRB1*0401	GAGSLQPLALEGSLQKRG	Proinsulin	Diabetes
DRB1*0401	IAFTSEHSHFSLK	GAD65	Diabetes
DRB1*0401	NFIRMVISNPAAT	GAD65	Diabetes

## REFERENCE

- Massilamany C, Krishnan B, Reddy J. Major Histocompatibility Complex Class II Dextramers: New Tools for the Detection of antigen-Specific, CD4 T Cells in Basic and Clinical Research. *Scand J Immunol.* 2015 Nov; 82[5].
- Krishnan, B., C. Massilamany, R.H. Basavalingappa, et al. Versatility of using major histocompatibility complex class II dextramers for derivation and characterization of antigen-specific, autoreactive T cell hybridomas. *J Immunol Methods.* 2015.
- Massilamany, C., F. Marciano-Cabral, B. Rocha-Azevedo, et al. SJL Mice Infected with *Acanthamoeba castellanii* Develop Central Nervous System Autoimmunity through the Generation of Cross-Reactive T Cells for Myelin Antigens. *PLoS One.* 2014. 9: p. e98506.
- Massilamany, C., A. Gangaplara, T. Jia, et al. In situ detection of autoreactive CD4 T cells in brain and heart using major histocompatibility complex class II dextramers. *J Vis Exp.* 2014: p. e51679.
- Massilamany, C., A. Gangaplara, T. Jia, et al. Direct Staining with Major Histocompatibility Complex Class II Dextramers Permits Detection of Antigen-Specific, Autoreactive CD4 T Cells In Situ. *PLoS One.* 2014. 9: p. e87519.
- Dolton, G., A. Lissina, A. Skowera, et al. Comparison of peptide-major histocompatibility complex tetramers and dextramers for the identification of antigen-specific T cells. *Clin Exp Immunol.* 2014. 177: p. 47-63.
- Massilamany, C., A. Gangaplara, H. Kim, et al. Copper-zinc superoxide dismutase-deficient mice show increased susceptibility to experimental autoimmune encephalomyelitis induced with myelin oligodendrocyte glycoprotein 35-55. *J Neuroimmunol.* 2013. 256: p. 19-27.
- Gebregiworgis, T., C. Massilamany, A. Gangaplara, et al. Potential of urinary metabolites for diagnosing multiple sclerosis. *ACS Chem Biol.* 2013. 8: p. 684-90.
- Gangaplara, A., C. Massilamany, D.M. Brown, et al. Coxsackievirus B3 infection leads to the generation of cardiac myosin heavy chain-alpha-reactive CD4 T cells in A/J mice. *Clin Immunol.* 2012. 144: p. 237-49.
- Massilamany, C., B. Upadhyaya, A. Gangaplara, et al. Detection of autoreactive CD4 T cells using major histocompatibility complex class II Dextramers. *BMC Immunol.* 2011. 12: p. 40.