

VIRUS DEXTRAMER® COLLECTION 1

CAT.NO. RX03

DETECTION OF VIRUS-SPECIFIC IMMUNITY

Activation of CD8+ T cells specific for persistent and acute viral infection is central in human anti-viral immunity. Virus-specific CD8+ T cells can be detected in the blood of infected individuals. The Virus Dextramer collection 1 provides reagents for detection, quantification and isolation of virus-specific T cells for 4 important general and opportunistic viruses. The collection enables detection of CMV-, EBV-, influenza- and BK virus-specific CD8+ T cells.

The Virus Dextramer Collection 1 consists of Dextramers displaying epitopes from immunodominant antigens from CMV, EBV, influenza and BK-virus. The Dextramers can be used individually or in combination for detection and/or isolation of virus-specific T cells. The Virus Dextramer Collection 1 can be used to monitor virus-specific T cell responses in a variety of research- and clinical settings:

- Monitoring virus immune status in immune-compromised individuals
- Monitoring virus immune status following transplantation
- Testing of virus-specific vaccines
- Profiling of virus-specific T cell responses

CONTENT

The Virus Dextramer Collection 1 comprises 4 virus-specific Dextramers and 1 negative control Dextramer:

Dextramer	Virus	# Tests	Cat. No.
HLA-A*0201 / NLVPMVATV	CMV	50	WB2132
HLA-A*0201 / GLCTLVAML	EBV	50	WB2130
HLA-A*0201 / GILGFVFTL	Influenza	50	WB2161
HLA-A*0201 / LLMWEAVTV	BK virus	50	WB2687
HLA-A*0201 / Negative Control	Neg. control	50	WB2666

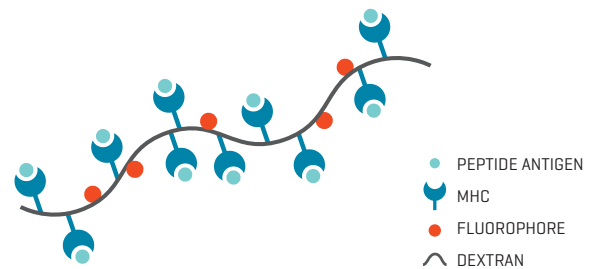
The Virus Dextramer Collection 1 comes as a set with either PE, APC or FITC label.

The Virus Dextramer Collection 1 is for research use only.

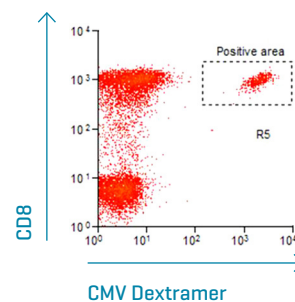
RELATED PRODUCTS

The Dextramers in Virus Dextramer Collection 1 are also available as single reagents. Immudex offers additional Dextramers not included in the collection. These display other epitopes from the same viruses, or epitopes restricted by other alleles. For further information, please see www.immudex.com

MHC DEXTRAMER®



FLOW CYTOMETRY ANALYSIS



Flow cytometry analysis using the CMV Dextramer.

POPULAR VIRUS DEXTRAMERS

Allele	Peptide	Antigen	Virus	Cat. No.
A*0201	NLVPMVATV	pp65	CMV	WB2132
H-2 Db	KAVYNFATC	gp33-84	LCMV	JA2160
A*0201	SLYNTVATL	gag	HIV	WB2194
A*0201	GILGFVFTL	mp	Influenza	WB2161
H-2 Db	ASNENMETM	np366-374	Influenza	JA2201
H-2 Kb	TSYKFESV	B8 pp	Vaccinia	JD3267
A*0201	GLCTLVAML	BMLF1	EBV	WB2130
A*0201	FLPSDFFPSV	cp18-27	HBV	WB3289
A*2402	QYDPVAALF	pp65	CMV	WF2133
H-2 Db	FQPQNGQFI	np396-404	LCMV	JA2142
A*0201	CINGVCWTV	pp	HCV	WB2720
A*0201	CLGGLTMV	LMP-2 426-434	EBV	WB2144
A*0201	FLLRILT	sp20-28	HBV	WB3290
H-2 Ld	SPSYVYHQF	env	MLV	JG3294
H-2 Kd	IYSTVASSL	HA	Influenza	JE2200

REFERENCES

- Ikegame, K., R. Kato, T. Fujioka, M. Okada, K. Kaida, S. Ishii, S. Yoshihara, T. Inoue, K. Taniguchi, H. Tamaki, T. Soma, and H. Ogawa. **Detection of donor-derived CMV-specific T cells in cerebrospinal fluid in a case of CMV meningoencephalitis after cord blood stem cell transplantation.** International journal of hematology, 2013, 97: 287-90.
- Hadrup, S. R., J. Strindhall, T. Køllgaard, T. Seremet, B. Johansson, G. Pawelec, P. thor Straten, and Wikby, A. **Longitudinal studies of clonally expanded CD8 T cells reveal a repertoire shrinkage predicting mortality and an increased number of dysfunctional cytomegalovirus-specific T cells in the very elderly.** Journal of immunology [Baltimore, Md. : 1950], 2006, 176: 2645-53.
- Cwynarski K, Ainsworth J, Cobbold M, Wagner S, Mahendra P, Apperley J, et al. **Direct visualization of cytomegalovirus-specific T-cell reconstitution after allogeneic stem cell transplantation.** Blood, 2001, 97[5]:1232-40.
- Borchers S, Bremm M, Lehrnbecher T, Dammann E, Pabst B, Wölk B, Esser R, Yildiz M, Eder M, Stadler M, Bader P, Martin H, Jarisch A, Schneider G, Klingebiel T, Ganser A, Weissinger EM, Koehl U. **Sequential anti-cytomegalovirus response monitoring may allow prediction of cytomegalovirus reactivation after allogeneic stem cell transplantation.** PLoS One, 2012, 7[12]
- Moal V, Zandotti C, Colson P. **Emerging viral diseases in kidney transplant recipients.** Rev Med Virol. 2013 Jan;23[1]:50-69.
- Setti, M., D. Fenoglio, F. Ansaldo, G. Filaci, S. Bacilieri, L. Sticchi, A. Ferrera, F. Indiveri, and M. Ghio. **Flu vaccination with a virosomal vaccine does not affect clinical course and immunological parameters in scleroderma patients.** Vaccine, 2009, 27: 3367-72.