

MHC MULTIMER & ELISPOT PROFICIENCY PANELS

Immudex is conducting the worldwide MHC Multimer and ELISPOT Proficiency Panels, in collaboration with the CIC (the US Cancer Immunotherapy Consortium of the CRI) and CIMT (the European Association for Cancer Immunotherapy).

Reliability and reproducibility of T cell assays is a requirement for efficient translation of immunological knowledge into clinical therapies. To reach a level of reliability and reproducibility of the Multimer and ELISPOT assays suitable for clinical trial monitoring, the CIC and CIMT have since 2005 held a series of proficiency panel studies to improve the intra- and inter-lab reproducibility of these immunoassays. This has led to the identification of a set of Harmonization Guidelines which define critical parameters for performing reliable and reproducible immunoassays.

WHAT IS A PROFICIENCY PANEL?

A proficiency panel allows the testing of a lab's proficiency in performing an immune monitoring assay. It also allows comparison of the lab's performance with peers in the field. The proficiency panels are held once a year.

Participation in a proficiency panel involves the following steps:

1. Registration
2. Receive blood cell samples [all participants receive identical samples]
3. Experimentally determine the number of antigen-specific T cells in samples
4. Report results back to Immudex
5. Receive report with your lab's performance. You will also receive a report of the other participants' performance, but in an anonymized format. Thus, other labs' individual performance is held confidential.

CIC/CIMT's Harmonization Guidelines highlighting critical steps of the assay protocol will be provided, but the participant is free to employ any preferred SOP and reagent.

Participants whose results differ significantly from their peers' results are offered help to identify changes to the protocol that might improve the participant's performance.



The Proficiency Panels are open for participation by any laboratory, independent of affiliation, geographic location or area of interest.

REGISTRATION – SIGN UP ON
www.proficiencypanel.com
or register by email to
proficiencypanel@immudex.com

WHO CAN PARTICIPATE?

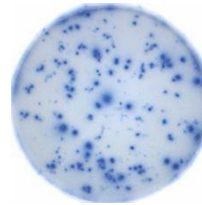
Any lab or person may participate, whether working in basic or clinical research, and in any field, e.g. Cancer Vaccines or Cell Therapy, Auto-immune diseases e.g. MS and Diabetes, Infectious diseases e.g. HIV, TB, Malaria, Measles, Hepatitis, CMV, or any other area where reliable immune monitoring is important.

WHY PARTICIPATE IN A PROFICIENCY PANEL?

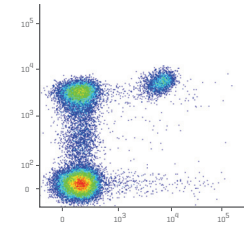
- **Validate your lab's proficiency** – Ensure your lab is capable of accurate, reproducible, and state-of-the-art cellular immunity analysis
- **Build credibility** – Provide confidence to sponsoring and regulatory agencies that your data is generated with a rigor that supports the regulatory approval process
- **Accelerate research and development** – More accurate immune monitoring data enable better decision making, speeding up the development process
- **Benchmarking** – Performance benchmarking allows the integration of data from multiple sites
- **Training of new personnel** – Participation in the Proficiency Panels improves performance
- **Ethical responsibility** – It is an ethical responsibility to the clinical trial volunteer that analyses are performed at highest possible standards

WHAT SHOULD YOU DO TO PARTICIPATE?

The next proficiency panels will be in the fall of 2013. Go to www.proficiencypanel.com for registration and more information.



Elispot assay



MHC Multimer assay