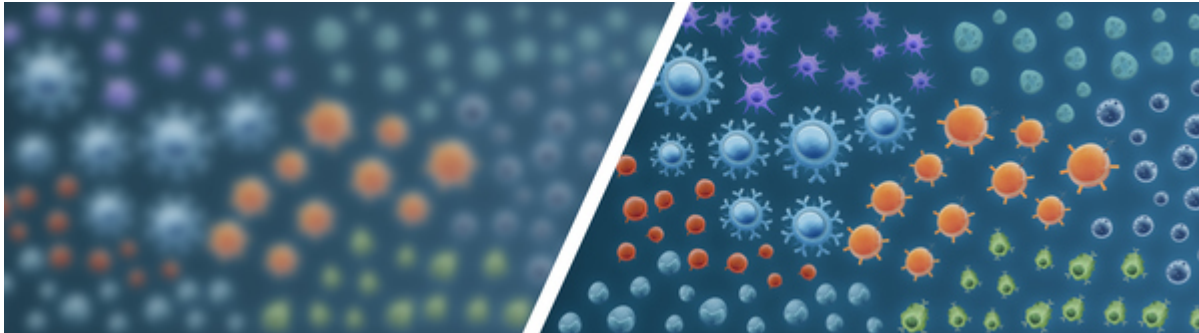


Read on web | Forward to a friend



Get the Better Picture of the Immune Response

dCODE® Klickmer, Unprecedented Sensitivity for Your B-cell research

Does your B-cell research need a tool to detect antigen-specific B-cells ensuring high specificity and sensitivity? Do you need to screen for several antigen-specificities in one sample while getting simultaneous information on B-cell receptors?

dCODE® Klickmer fulfills your needs!

Create a high-avidity multimer reagent by simply loading B-cell antigens onto dCODE Klickmer and embrace all the advantages of this powerful reagent:

- Sensitive detection of antigen-specific B cells
- High-throughput screening of many different antigen-specificities in one sample
- Simultaneous screening of antigen-specific T cells and B cells in one sample
- Transcriptomic profile combined with B-cell receptor sequence at the single cell level

With dCODE Klickmer you can characterize antigen-specific B cells with unprecedented sensitivity.

[Discover dCODE® Klickmer applications](#)

Kind regards,

Sara Bursomanno, PhD
Product Manager

About Immudex: Immudex provides solutions for immune monitoring within cancer immunotherapy, transplantation, infectious disease, and autoimmunity. With an off-set in Immudex' proprietary Dextramer® and dCODE Dextramer® technologies, we develop and market research reagents and assay solutions, enabling researchers and clinicians to measure disease-specific immunity. GMP grade and diagnostic Dextramer reagents are available and currently in use within the USA and Europe. Under an agreement with the US Cancer Immunotherapy Consortium (CIC) and the European Cancer Immunotherapy Consortium (CIMT), Immudex also provides MHC Multimer and Elispot proficiency panel services worldwide.

Immudex | www.immudex.com |

[Unregister](#)