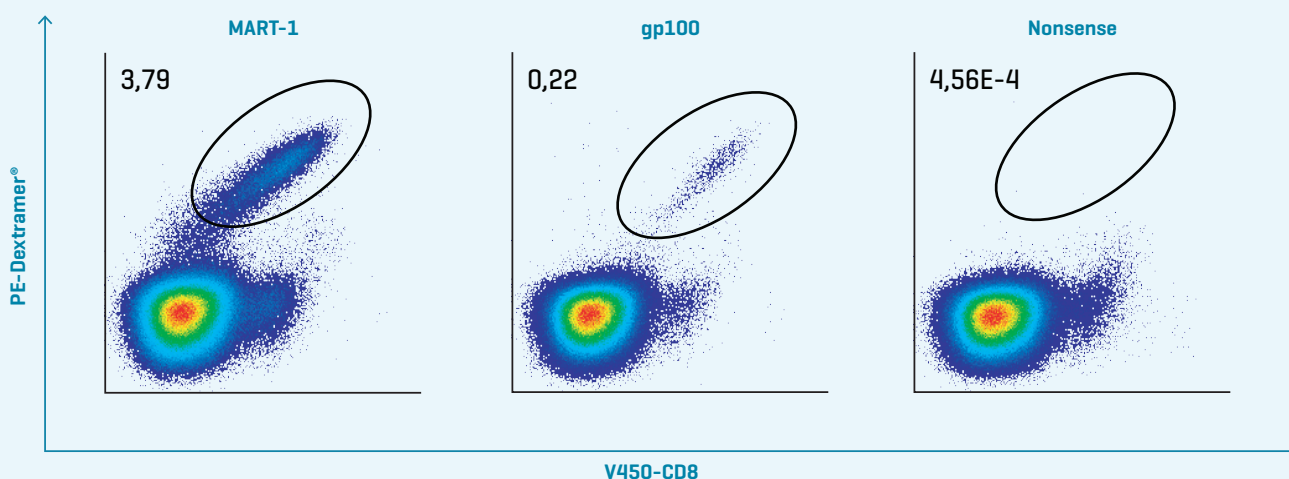


Obtain Valuable Insights from Cancer T-Cell Immunity

The MHC Dextramer® Melanoma Panel for flow cytometry consists of a hand-picked collection of MHC Dextramer® reagents specific for six melanoma-associated antigens: Tyrosinase, gp100, MART-1, MAGE-A1, MAGE-A3, and NY-ESO-1.

Ensure High-Quality Results

- High-sensitivity and specificity Dextramer® reagents that provide you with reproducible results, even with low-affinity cancer-specific CD8+ T cells
- Dual-color staining for each specificity with PE- and APC conjugate that will reduce the frequency of false positives



Recognition of common tumor-associated antigens by tumor-infiltrating lymphocytes with MHC Dextramer® Melanoma Panel

Adapted from Wickström *et al.*, 2019.

Benefits of the MHC Dextramer® Melanoma Panel

The MHC Dextramer® Melanoma Panel provides all the benefits of Immudex Dextramer® technology for reliable cancer immune monitoring from early discovery to clinical trials:

- Ready-to-use panel for various melanoma-antigens
- Time- and cost-saving approach
- Ensure consistent, reproducible, and comparable results
- Expand the limits of your research



● Peptide antigen ~ Dextran Y MHC ● PE

What Can You Do with Melanoma Dextramer® Panel

- Screen for common tumor-associated antigens in blood or tumor biopsies
- Profile tumor-reactive CD8+ T-cell responses and expansion upon epitope pulsing
- Evaluate vaccine efficacy
- Monitor long-term immunity
- Guide immunotherapeutic development

Product Description

MHC ALLELE	PEPTIDE	FLUOROPHORE	ANTIGEN	TEST SIZE
HLA-A*0201	ELAGIGILTV	PE	MART-1	25
HLA-A*0201	ELAGIGILTV	APC	MART-1	25
HLA-A*0201	SLLMWITQV	PE	NY-ESO-1	25
HLA-A*0201	SLLMWITQV	APC	NY-ESO-1	25
HLA-A*0201	KVAELVHFL	PE	MAGE-A3	25
HLA-A*0201	KVAELVHFL	APC	MAGE-A3	25
HLA-A*0201	YMDGTMSQV	PE	Tyrosinase	25
HLA-A*0201	YMDGTMSQV	APC	Tyrosinase	25
HLA-A*0201	IMDQVPFSV	PE	gp100	25
HLA-A*0201	IMDQVPFSV	APC	gp100	25
HLA-A*0201	KVLEYVIKV	PE	MAGE-A1	25
HLA-A*0201	KVLEYVIKV	APC	MAGE-A1	25
HLA-A*0201	Neg. control	PE	-	25
HLA-A*0201	Neg. control	APC	-	25

Each Dextramer® reagent in the panel is also available as a single reagent. Check our website for additional MHC I Dextramer® specificities fitting your cancer research.

© Immudex ApS. Denmark, 2021

For research use only. Not for use in diagnostic or therapeutic procedures.